



COVID-19 Coding Tips

Intellis IQ coding guidance related to the 2019 novel coronavirus (COVID-19)

For a quick reference, we have updated the following information to provide official diagnosis coding guidance for health care encounters and death related to the 2019 novel coronavirus (COVID-19) previously named 2019-nCoV. This coding guidance has been developed

by the CDC and approved by the four organizations that make up the Cooperating Parties: the National Center for Health Statistics, the American Health Information Management Association, the American Hospital Association, and the Centers for Medicare & Medicaid Services.

NEW Code for COVID-19: U07.1

Effective April 1, 2020 (not to be used retroactively)
Intended to be used for all patient types (IP and OP) as the principal or first-listed diagnosis.

Use additional code to identify pneumonia or other manifestations

Excludes1:

- B34.2** Coronavirus infection, unspecified site
- B97.2-** Coronavirus as the cause of diseases classified to other chapters
- J12.81** Severe acute respiratory syndrome [SARS], unsp

Intended to be used for all patient types (IP and OP) as the principal or first-listed diagnosis

Presumptive Cases of COVID-19

Presumptive positive COVID-19 test results SHOULD BE coded as confirmed.

A presumptive positive test result means an individual has tested positive for the virus at a local or state level, but it has not yet been confirmed by the CDC

Documentation that states: "suspected", "possible" or "probable" COVID-19

Assign a code(s) explaining the reason for encounter (such as fever, or Z20.828).

Exposure to COVID-19

Possible exposure

to COVID-19, but this is ruled out after evaluation

- Z03.818** Encounter for observation for suspected exposure to other biological agents ruled out

Actual exposure

to someone who is confirmed to have COVID-19

- Z20.828** Contact with and (suspected) exposure to other viral communicable diseases.

Signs and Symptoms of COVID-19

Where a definitive diagnosis has not been established, assign the appropriate code(s) for each of the presenting signs and symptoms such as:

- R05** Cough
- R06.02** Shortness of breath
- R50.9** Fever, unspecified

To learn more about diagnosis coding for COVID-19, view our presentation: education.intellisIQ.com



Our Industry-Leading Coding and CDI Experts

Kim Felix RHIA, CCS, Vice President of Education



Kim has more than twenty-five years of HIM coding experience, including coding, auditing, and management at academic medical centers as well as community hospitals. She was a project manager for a Big Four RADV audit and ICD-10 conversion for analytics software.

Kim is a distinguished member and presenter for various national and local associations. She is a recognized leader in the HIM education field. Her education experience includes adjunct faculty appointments at Temple University, Gwynedd-Mercy College, Pierce College, Thomas Jefferson University as well as acting as a study mentor at Western Governors University.

Jeanie Heck BBA, CCS, CPC, CRC, Director of Education



Jeanie has built a career in the HIM field for more than twenty-five years. Her work has focused on the outpatient practice arena. She has extensive experience as both a business and a practice manager.

Jeanie is an approved AHIMA ICD-10-CM trainer and has extensive teaching experience in CPT, ICD-9-CM, ICD-10-CM, ICD-10-PCS, medical coding practicum, healthcare reimbursement, and medical terminology. She serves as an adjunct instructor at Camden County College and Santa Barbara City College. She currently serves as a lead auditor for a Big Four RADV audit.

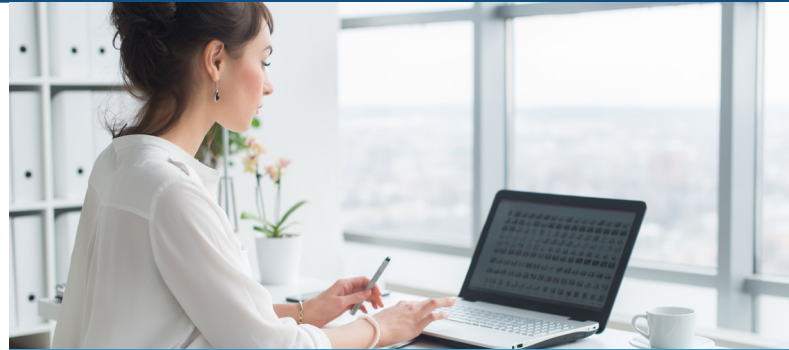
Allison Van Doren RN, BSN, CCDS, CDIP, CRC, Vice President of Clinical and Quality Services



Allison is a national leader for CDI and Quality initiatives. She possesses extensive experience in creating and managing CDI programs, PSI and Mortality committees leading academic medical centers to best documentation practices. Her approach profoundly impacts patient care,

patient safety, denials, and reimbursement. Additionally, she has 15+ years of cardiac and surgical care nursing experience.

Allison's passion for CDI focuses on both education and quality. She understands clients' complex needs and provides knowledge-based training, support solutions, and excellent service.



Our Proven Expertise

- ✓ Conveys advanced knowledge of CMS landscape and standards
- ✓ Quantifies lost reimbursement
- ✓ Customizes programs to optimize reimbursement
- ✓ Analyzes primary care and specialty clinic coded data
- ✓ Leverages analytics, EHR tech to drive process improvements
- ✓ Empowers physicians to focus on quality patient care
- ✓ Tailors education for providers and coders

Our Healthcare Advisory Solutions

Revenue Cycle and Health Information Services

- Medical Coding
- Medical Coding Audits
- Department Operational Assessments
- Chargemaster Engagements
- Risk Adjustment/HCC Coding and Auditing
- Denials Management

Health Information Technology Services

- Master Patient Index Clean-up
- Clinical Data Abstraction
- Scanning & Indexing
 - EMR Implementation
 - HIMMS Stage 7 Point of Care
- EPIC Implementation and Management
- OnBase Implementation and Management

Clinical Documentation and Quality Services

- Second Level Reviews
- Query Reviews
- CDI Department Assessments
- IP and OP Program Implementation
- IP and OP CDI Review Process
- PSI and Mortality Review/Committee Implementation

Education and Training Services

- Medical Coding
- Clinical Documentation Integrity
- Provider Education
- Annual Coding Updates

Intellis can provide credentialed staff augmentation, program support and interim management across the revenue cycle continuum.